



Industrial XP Part I

Joshua Kerievsky, Diana Larsen
Industrial Logic, Inc.

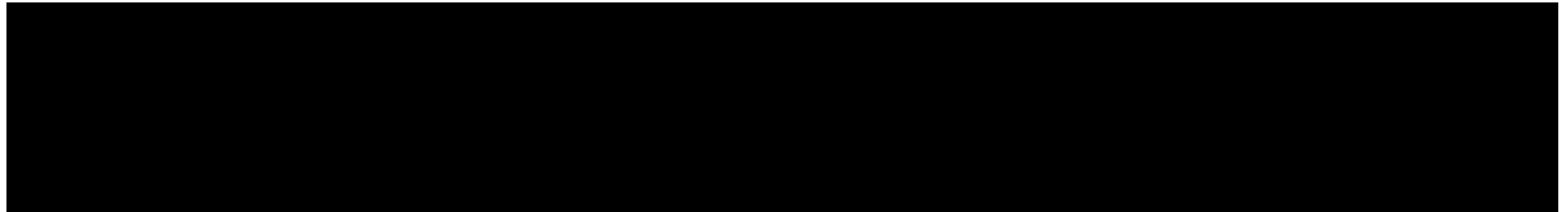
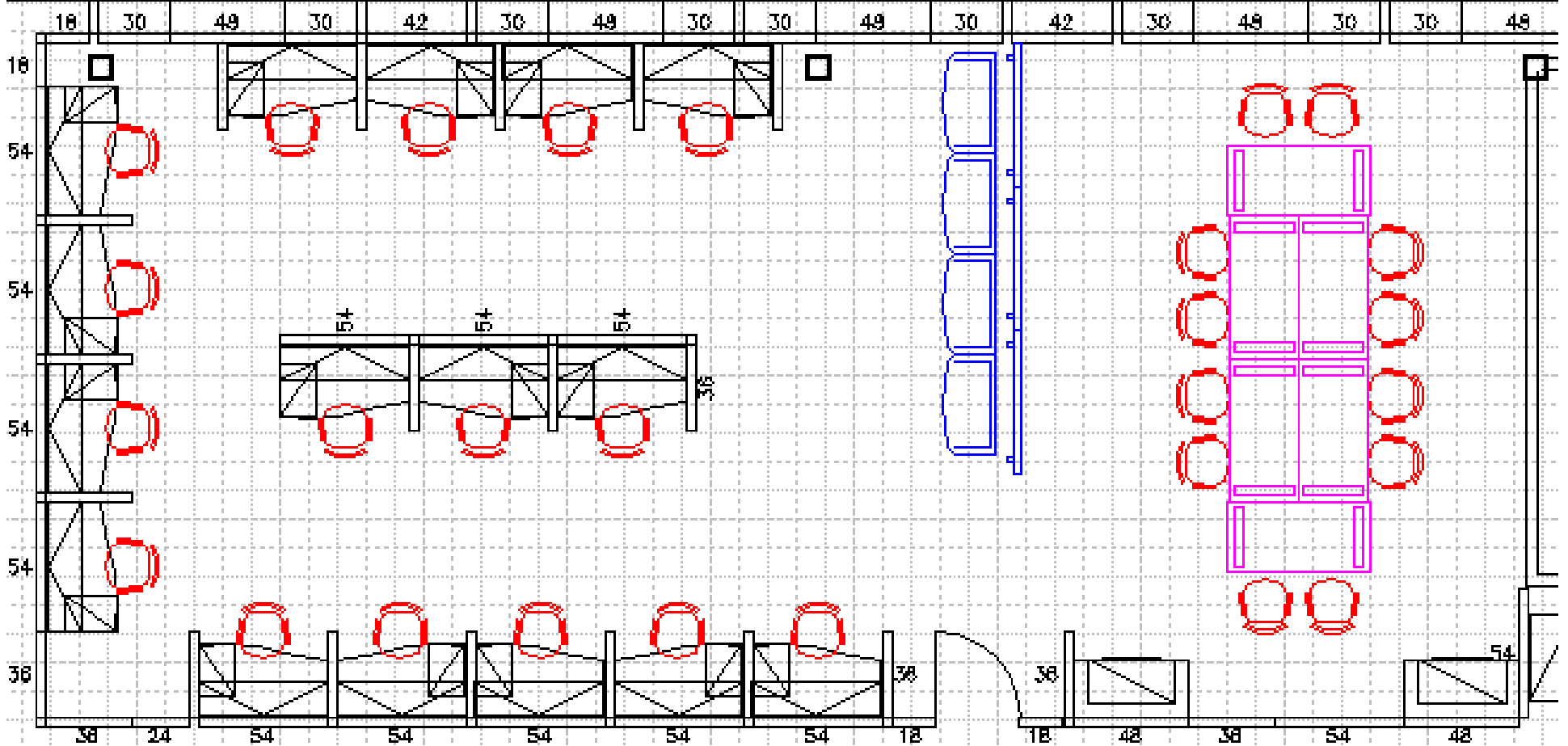
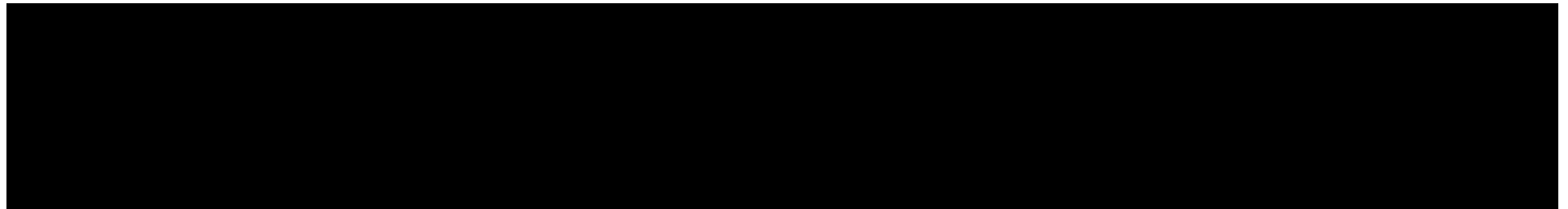
<http://industriallogic.com>

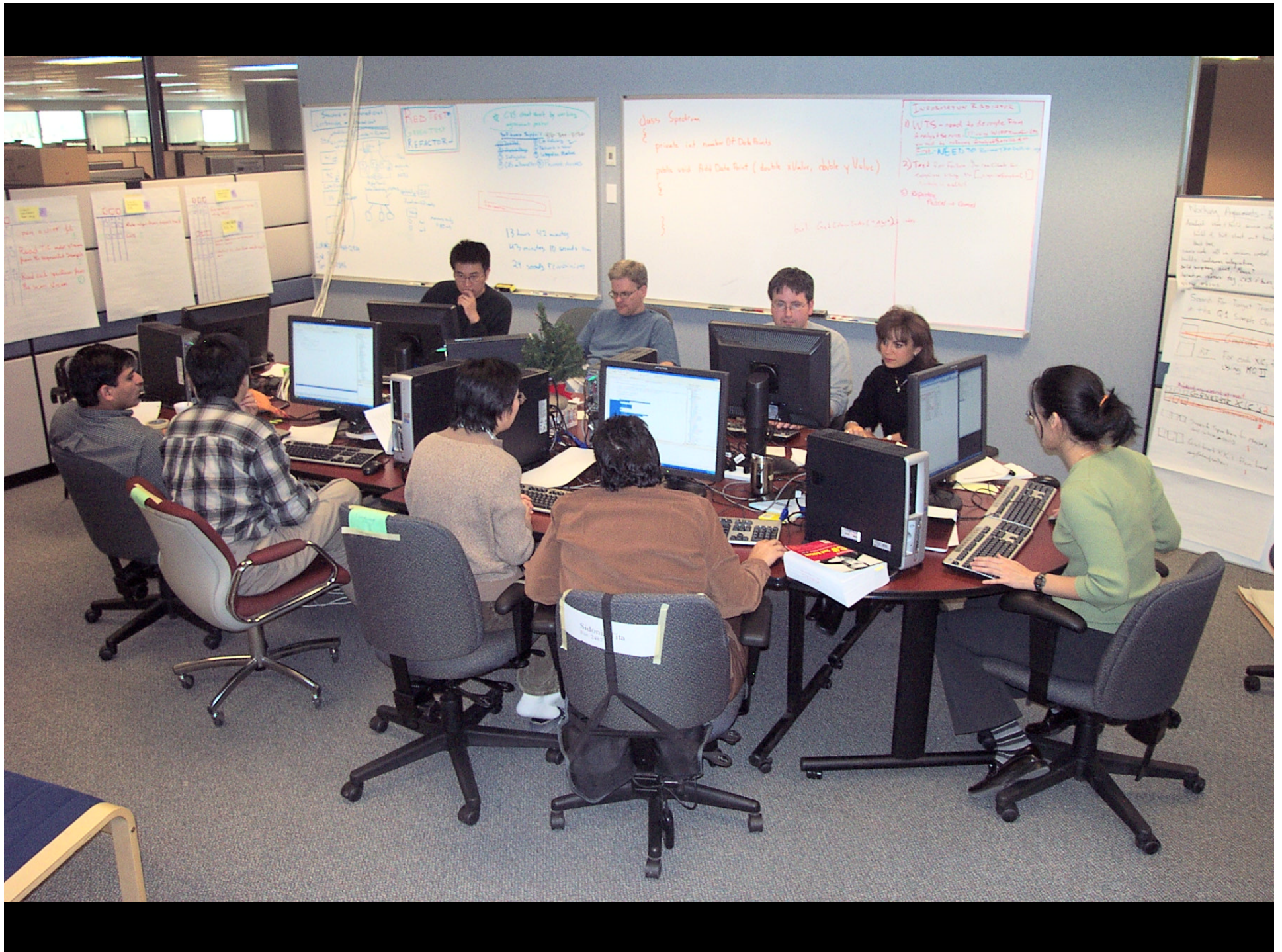
866-540-8336

Agenda

- Readiness Assessment
- Project Chartering
- Continuous Risk Management
- Continuous Learning
- Retrospectives

Sitting
Together











Project Community

PROJECT COMMUNITY

PANEL A

Customers

- Lorne - Julie - Product Manager - Hardware
- Nadia - Lead/Application Specialist
- Nick - MET ID application Specialist
- Gary Impey - Software Product Manager
- Byron - Technical Marketing
- Dan - Product Manager/Marketing
- Carmoi - Applied Biosystems Software Manager
- Tom (REMO, CARMEN) - real-world user
- Shengping - application research

CONTENT
DIRECTIONAL ADVISORS
CONTENT

Developers

- Chris - Frameworks/Emergent Coach
- Rob - Frameworks
- Ray - Frameworks
- Shengping - MET ID Developer
- Sidonia - Application Developer
- Hai - Application Developer
- Jim Bohannon - BIOANALYST Developer
- Friedrich - Liaison to ANALYST

COACHES
- JIMS.
- GUNJAN
- JOSH
- Declan - CVS consultant
IT Support
- Heather R.
- Paul
- Victor

More Customers

- Fiona - Product Manager - Hardware
- Tamara - Product Manager - Hardware
- Customer - Christine Dieckmann/Merck
- Customer - Gerard Hopfgartner/Univ of Geneva
- Elia
- Tonia
- Louisa
- alisia

METABOLISM specialists

PROJECT COMMUNITY

PANEL 1

GOLDOWNERS

- KAMRAN - Dir - Quality Assessment + Regulatory Affairs
- ANDREW - Product Test Manager
- JOE - JOINT VENTURE DIRECTOR
- KEV - THE MAN - Director Product Development
- JOHN - Applied Bio - Software Manager
- SCOTT - Software Manager
- STEVE - Application Specialist
- HEATHERS - Tech writing/user Experience Manager
- PIERRE - UP, Operations

- Yvet - Research Scientist
- Eva - Research Scientist
- Jeff - Metabolism Specialist
- Tsai - Metabolism Specialist

TECH WRITING
- LAURENE writer
- JANET team lead

MANAGERS

- BRIAN - FACILITIES
- RON - Project Manager
- DALIA - Software Lead/Emergent Coach

PRODUCT TEST
- LEANNE tester

SOFTWARE QUALITY ASSURANCE

- HARVEY
- Crystal - CUSTOMER SOFTWARE SUPPORT

JIGGLER III



Values

VALUES

SIMPLICITY

RESPONSIBILITY

FRANK COMMUNICATION

QUALITY

PRIDE

Pairing







JUnit (MapTest)

Runs: 17/17 Errors: 0 Failures: 1

Failures Hierarchy

testIsEmpty(com.industriallogic.collections.tests.MapTest)

Failure Trace

JUnit framework.AssertionFailedError: set is not empty
at com.industriallogic.collections.tests.MapTest.testIsEmpty(MapTest

J) Permi... | J) Syste... | J) Produ... | J) TestD... | J) Produ...

```
public void testIsEmpty() {
    assertTrue("set is empty", empty
    assertTrue("set is not empty", on
}

public void testSize() {
    assertEquals("size is 0", 0, emp
    assertEquals("size is 1", 1, onel
    assertTrue("size > 1", manyElemen
}

public void testGetWhenKeyInMap() {
    assertEquals("value found", "Cal:
}

public void testGetWhenKeyNotInMap(
```

JUnit (AllTests)

Runs: 91/91 Errors: 0 Failures: 0

Failures Hierarchy

Failure Trace

Package Explorer | Hierarchy | Chat View | JUnit

Project Chartering

VISION

We are able to quickly and easily deliver new [redacted] Market - specific software solutions of the highest quality, ease of use and ease of learning

MISSION

- To reduce software debt
- To develop a software architecture driven by [redacted] 2.0 and [redacted] 1.7
- To implement Industrial XP in a repeatable and sharable way

Storytelling



Continuous Tracking

Enhancements

#	Product	EE-1
577	Product Inv Maint	EE-1
634	Product	EE-1/2
32	Product	EE-1/2
182	Product	EE-1/2
385	Product	
340	Event	
387	CP	
135	Event	
Ray's #1	General	
Ray's #2		
Ray's #3		

FT IM SPREADSHEET TEMPLATE KLR-1
 INTERFACES - ~~PROD D/L, P/O,~~
TRX, Batch VENDOR SW-1

CP MORE DATATYPES EH-2
 DISPLAY ORDER (GROUPS WITHIN GROUPS) EH-1
 SORT BY CODE/DISPLAY CODE EH-1
 CP APPLICATION - DIRECT SQL BS-1
 CP DB - VALUES TO SEP. TBL. DV-2

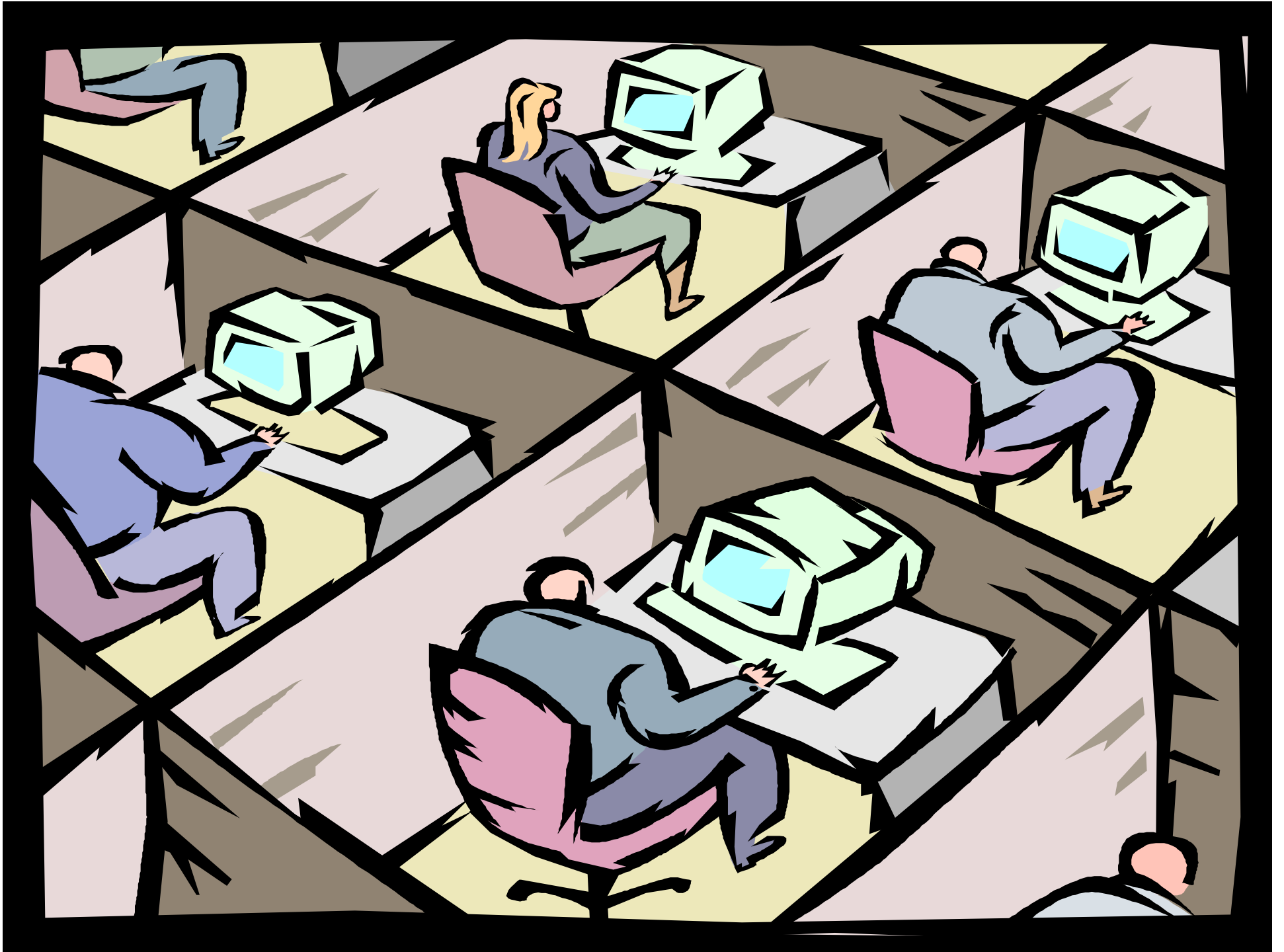
PRODUCT

Redo Expanded Prod Search JB/EH 3
P.O. Style Selection for PO EH 1

Readiness Assessment

Continuous Risk Management





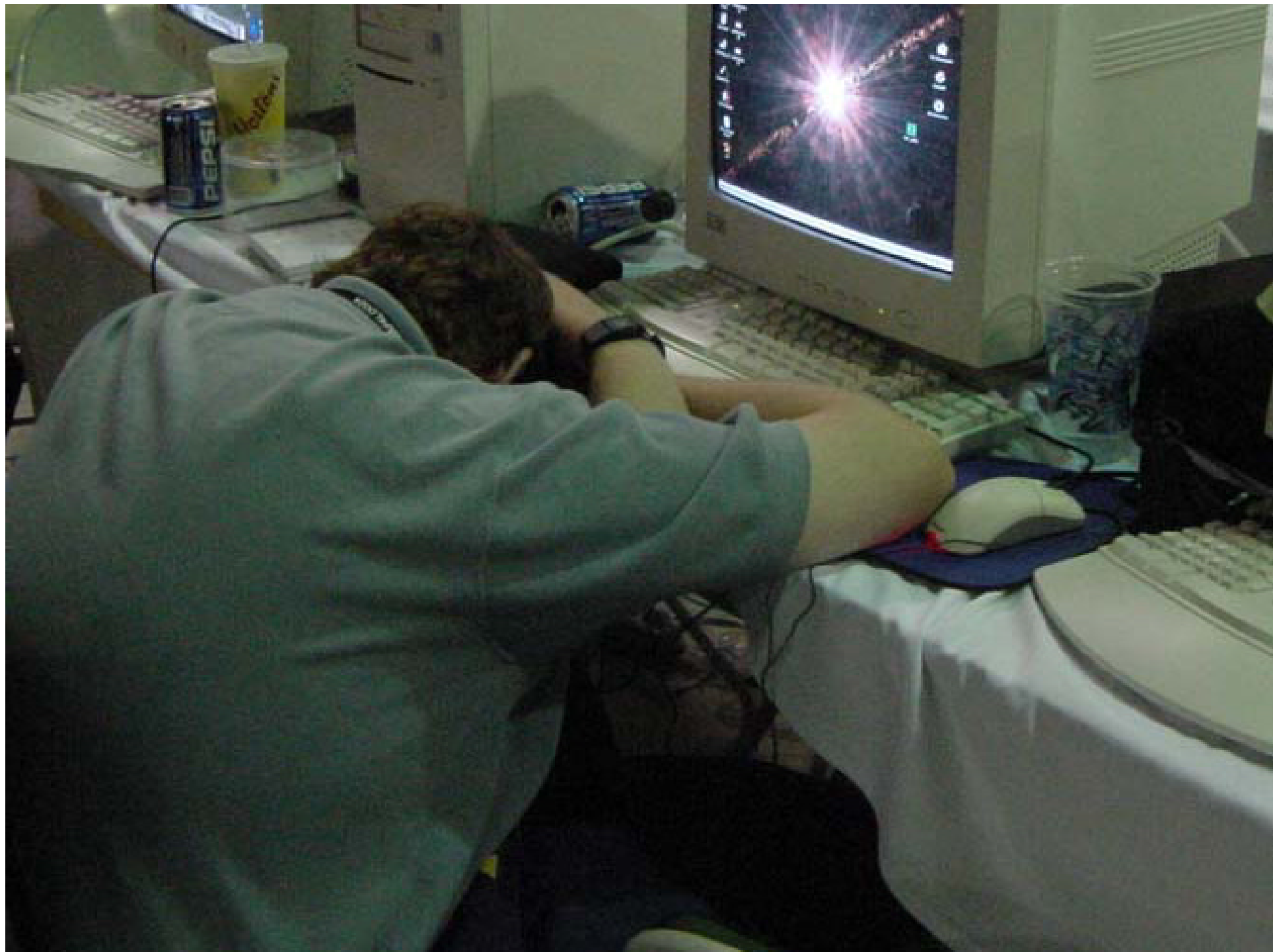
High Defect
Count

Localization
of Knowledge

Continuous Learning



Sustainable
Pace



Retrospectives

Worked Well

Needs Improvement

Stand
up meetings

CVS
TOOLS

CVS
TOOLS

Screen
Real Estate

Pair-
Programming

Refactoring
Tools

Familiarity
with Tools

TASK
BREAKDOWN

Communication

Didn't
Over-Engineer

CUSTOMER
TEST
FIRST

LONG,
THIN
SLICE

IMMERSIVE
ENVIRONMENT

Courage

TOO MANY
COMMENTS

Refactoring

GOOD
TESTING

Coding
Convention

Courage

